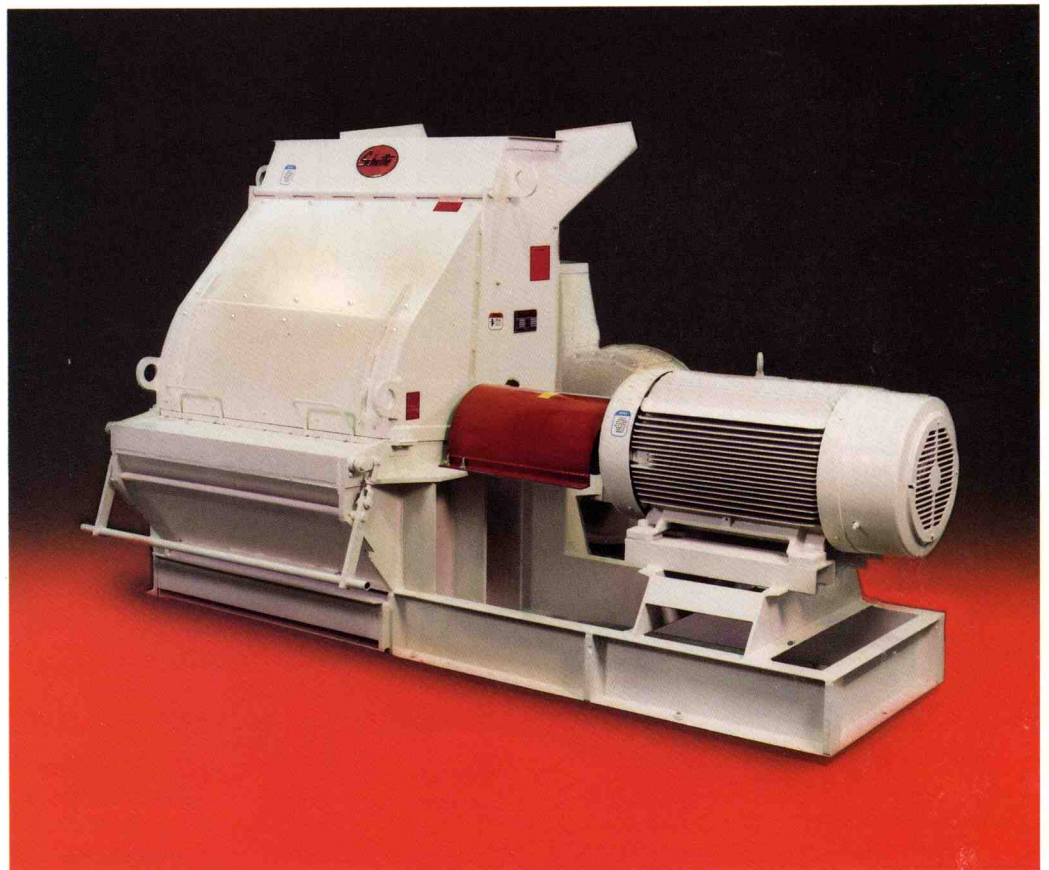
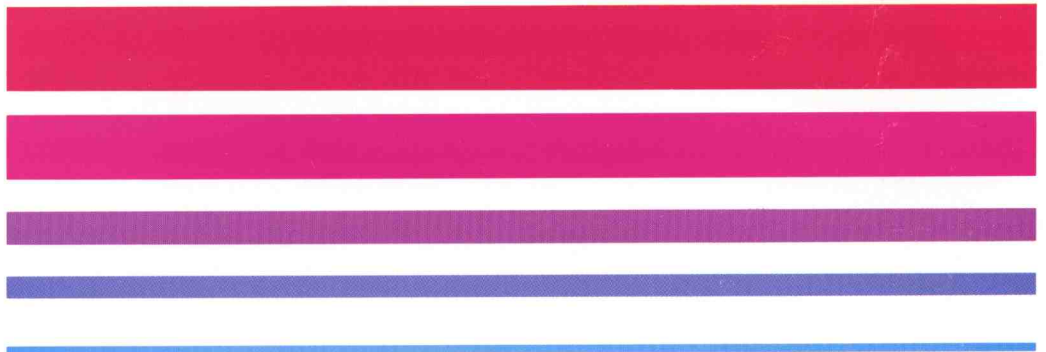


SCHUTTE SERIES 15
INDUSTRIAL GRINDER



Schutte *The first name in hammer mills that last*



Series 15 processes scrap wood

EXCEPTIONAL EFFICIENCY AND ECONOMY FOR MORE PROFITABILITY

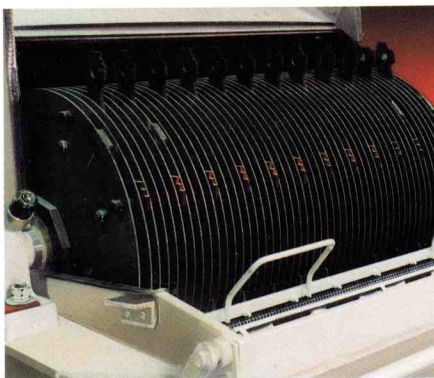
The Schutte Series 15 Industrial Grinder offers a highly efficient grinding action and unique fan design to deliver high throughput with minimum power consumption for easy grinding of all wood...even materials with a high moisture content.

The Series 15 takes shavings and chips directly, and finishes the job a hog begins on slabs and edgings. It produces a uniform, first quality sawdust that you can market for compost and litter, for polishing and use in tanning operations, for the manufacture of press board, roofing paper, animal bedding and more. Greater production at lower costs per ton assures maximum profitability from your wood scrap processing.



BETTER BUILT FOR A BETTER VALUE

The Series 15 is a much heavier, longer-lasting machine for considerably less money. Initial investment is usually recovered in a remarkably short time and maintenance costs are minimal. It offers the innovative features and uncompromising quality in construction and workmanship that you can only get from a Schutte hammer mill.



EXCLUSIVE RIBBED GRINDING PLATES MAKE IT FASTER AND MORE EFFECTIVE

The Series 15 features special ribbed grinding plates located at the front and rear of the machine to handle bark and other troublesome material with ease. Action against the plates cuts and disintegrates the wood fibers promoting faster and more effective screen grinding.



PROPERLY SIZED VACUUM FAN SYSTEM MINIMIZES POWER CONSUMPTION

Schutte's properly sized vacuum fan system minimizes power consumption. We match CFM to the mill's screen area for optimum throughput capacity. Fan systems are available from 4,000 CFM up to 15,000 CFM. Separate motor driven fan systems provide for positive evacuation.

Extra rugged, all-welded—not riveted—steel construction increases wear life and make it impossible for blades to fly off for added safety. The housing is equipped with a replaceable liner and is designed to allow removal of both fan and liner without disturbing the blow pipe.



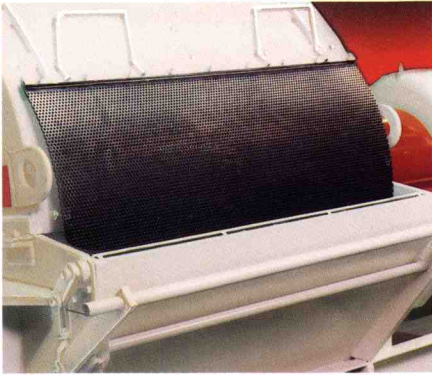
Separate motor-driven vacuum fan systems ...typical 8,000 CFM system



15,000 CFM vacuum fan system

to a profitable grind in minutes.

FAST, CONVENIENT SCREEN CHANGE



Screens slide in and out freely and quickly. The bar handle used for removing and inserting the screens has an exclusive, patented eccentric lock. As the handle is pushed down, the screen is positioned for perfect hammer tip to screen clearance and locks automatically into place.

INNOVATIVE SCHUTTE HAMMERS LAST LONGER

Heavy notched hammers are provided with the Series 15 for normal wood residue grinding. Fine, close grain, specially hardened steel retains sharpness and has the toughness needed to withstand wear. Heavy, hard-faced strap hammers are recommended for such materials as bark. They are made from special steel and heat treated to retain sharpness in long, full service life.



EXCLUSIVE EXTRA DEEP BOTTOM PAN FOR FASTER MATERIAL REMOVAL

Material removal is fast and easy with the Series 15 extra deep bottom pan. The added depth also eliminates the possibility of any plugging in the pan, assuring continuous mill operation without unnecessary shutdown.

COMPACT, SELF-CONTAINED DESIGN SAVES SPACE

The Series 15 requires minimum floor space. Only one extra heavy shaft is used, eliminating awkward auxiliary shafts, belts and pulleys. The inlet hopper is attached to the machine in a fixed position for a permanent feeding setup, allowing the mill to be placed close to a wall or in tight corners.

TOUGH, HEAVY DUTY CONSTRUCTION FOR TROUBLE- FREE PERFORMANCE

Years of trouble-free performance are assured through the use of extra heavy, all welded steel construction. The heavy, heat treated alloy steel drive shaft, supported by oversized, self-aligning ball bearings enclosed in dustproof housings, resists the shock of overloads.

LARGE THROAT AND FEED OPENINGS ENHANCE MATERIAL FLOW

With an extra high throat and unusually large feed opening, the Series 15 is equally efficient whether handling free-flowing material or bulky, compacted masses.

CHOICE OF DIRECT OR BELT DRIVE TO MEET YOUR NEEDS

On direct drive units the motor mounting is an integral part of the mill. V-belt drive models (recommended for use with slower speed motors or power units) are also available.

OPTIONAL PERMANENT MAGNET PROVIDES EXTRA PROTECTION

For extra protection against stray ferrous metal, a permanent magnet may be installed in the feed table. The magnet requires no auxiliary equipment and is removed for easy cleaning.

LUBESITE® FOR POSITIVE BEARING LUBRICATION

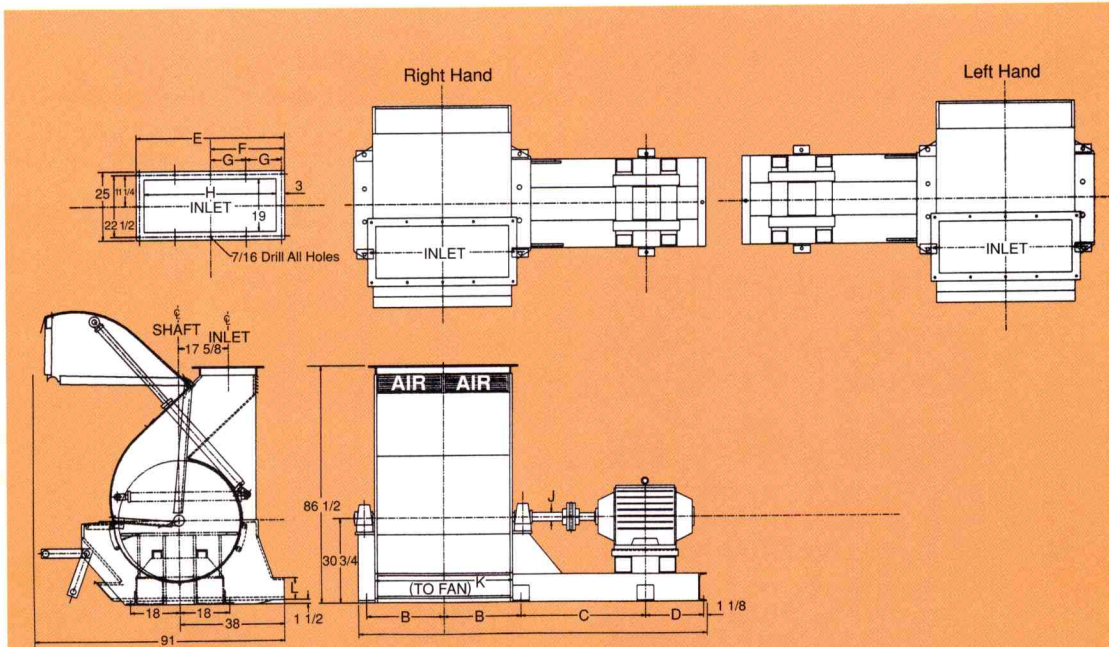
The Series 15 is factory-equipped with a LubeSite automatic grease feeder that automatically provides the correct amount of grease to bearings. The LubeSite units are designed to operate continuously in temperatures from -100°F to $+250^{\circ}\text{F}$. A transparent dome on each unit provides a constant visual check of grease level.

SCHUTTE...THE FIRST NAME IN HAMMER MILLS THAT LAST

The Series 15 Industrial Grinder is just one of a complete line of hammer mills offered by Schutte Pulverizer. Schutte has been an industry leader for over 60 years with simpler, safer, longer-lasting hammer mills of uncompromising quality. Every Schutte hammer mill is built to deliver superior performance, day after day, year after year, under the most severe operating conditions.

For more information on the Series 15 industrial Grinder or on our complete line of hammer mills contact Schutte Pulverizer Co., Inc. 61 Depot Street, P.O. Box 546 Buffalo, NY 14240-0546. Telephone: (716) 855-1555. FAX: (716) 855-3417.

SPECIFICATIONS FOR SERIES 15 INDUSTRIAL GRINDER



NOTE: ALL BASE MOUNTING HOLES 7/8 PUNCH

NOTE: OPTIONAL BOTTOM PAN TO FAN –
RECTANGULAR PAN 5 X INTERIOR MILL WIDTH
"A" + 1/2" OUTSIDE DIMENSION

Other Dimensions and Specifications

- Available in 24", 36", 48" and 60" widths
- Power Required: 150 to 450 HP
- Shaft speed: 1800 RPM
- Furnished with or without motor
- Belt or direct drive

	A	B	C	D	E	F	G	H	J	K	L
1580	93 ³ / ₄ "	15 ³ / ₈ "	32 ³ / ₄ "	14 ¹ / ₈ "	30 ⁵ / ₁₆ "	15 ⁵ / ₃₂ "	61 ⁵ / ₁₆ "	24 ⁵ / ₁₆ "	27 ⁷ / ₈ "	25 ¹³ / ₁₆ "	7 ¹ / ₂ "
1590	123 ¹ / ₂ "	21 ³ / ₄ "	46 ¹ / ₂ "	29 ³ / ₈ "	42"	21"	97 ⁷ / ₈ "	36"	27 ⁷ / ₈ "	37 ¹ / ₂ "	*
15100	136"	28"	46 ¹ / ₂ "	29 ³ / ₈ "	54"	27"	127 ⁷ / ₈ "	48"	27 ⁷ / ₈ "	50"	*
15200	148"	34"	46 ¹ / ₂ "	29 ³ / ₈ "	66"	33"	157 ⁷ / ₈ "	60"	27 ⁷ / ₈ "	62"	*

* Dimension determined by CFM req.

Schutte

The first name in hammer mills that last

Schutte Pulverizer Co., Inc. • 61 Depot Street • P.O. Box 546 • Buffalo, NY 14240-0546
Toll-Free: 1-800-4GRIND4 • Telephone: (716) 855-1555 • FAX: (716) 855-3417
e-mail: SPCGRINDER@aol.com